

LF

LM



Med

LF

DP

Lat



Med

LF

DP

Lat





LF

DP

Lat

Med

Med

LF

DP

Lat





LH

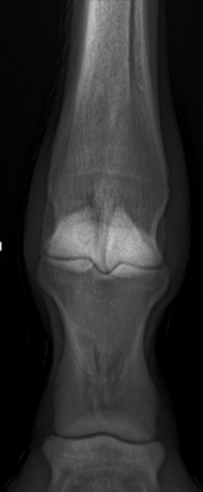
LM

Med

LH

DP

Lat





LH

LM



LH
PLDMO

Lat

Med



Med

This is a lateral view of a knee joint. The femur is at the top, and the tibia is at the bottom. A semi-transparent, light-colored overlay, labeled 'DLPMO', is applied to the lateral aspect of the knee, covering the patella and the distal femur. The overlay appears to be a 3D model or a specific imaging technique used in medical diagnostics. The text 'Med' is located at the bottom left, and 'Lat' is at the bottom right. The text 'LH' and 'DLPMO' are stacked in the bottom right corner.

LH
DLPMO
Lat



RH



L



RF

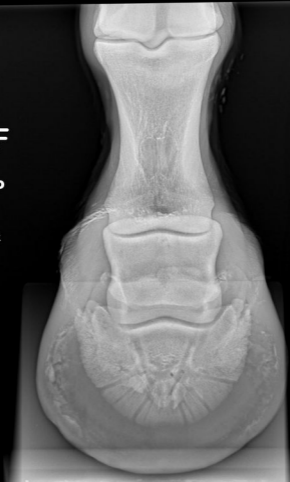
LM

RF

DP

Lat

Med



RF

DP

Lat

Med





RF

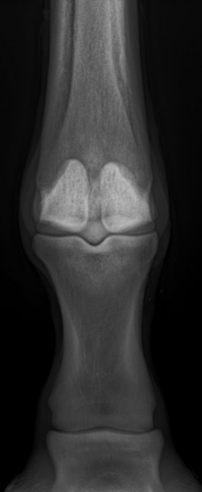
LM

RF

DP

Lat

Med





RH

LM

RH
DP
Lat



Med



RH
LM



Med

RH
PLDMO
Lat

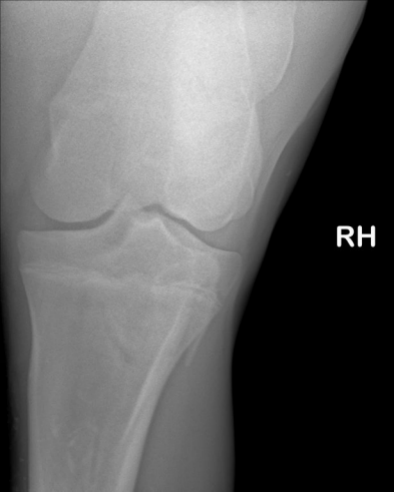
RH
DLPMO
Lat



Med



RH



RH